

# PLUMBING SERVICES

From Central Pennsylvania's Trusted Advisors



EMPLOYEE-OWNED

## HBMcCLURE

WE RECOMMEND. YOU DECIDE.™



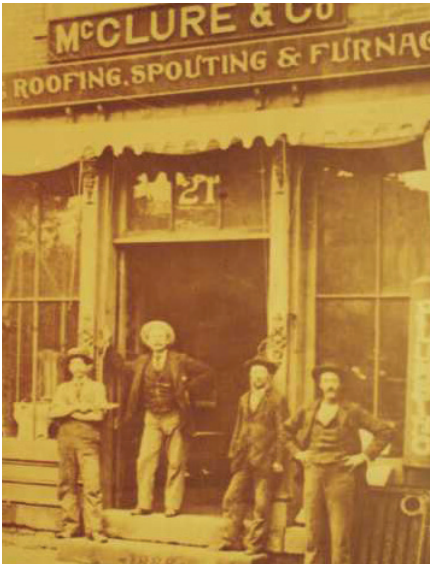
# Meet the HB McClure Plumbing Services Team



## Our Mission

It is the mission of HB McClure Company and its employee owners to be a trusted advisor to all of our customers. As professionals, we utilize our expertise to assist each client in selecting the most appropriate solution to their needs. We strive to deliver our services while adhering to our fundamental principles of Trust, Quality, and Value.

# HB McClure, LLC—Comfort for Home or Business



HB McClure has a 100+ year history of helping customers stay warm in the winter and cool in the summer. Today, over 320 blue and gold trucks travel our region daily to see that your comfort is assured.

In 2010, HB McClure instituted an Employee Stock Ownership Plan (ESOP). That means your HB McClure contact is motivated more than ever to provide you with the highest level of service and the most value at the best price.



Robert F. McClure  
Chairman of the Board



Robert F. Whalen  
President and CEO

From automatic fuel oil delivery to service plans to 24-hour emergency service, HB McClure really is the company you can trust for comfort.

With over 525 employee-owners and the most experienced, friendly technicians around, you can trust HB McClure to give you the right solution the first time. Just like we have been for the past 100 years.

**We're HB McClure—Trust Us For Comfort**



## Our Difference

**100% Employee-Owned** — Everyone you deal with has a vested interest in doing the best job possible.

**Work Quality** — Our technicians receive ongoing training and deliver high-quality work.

**Accurate Needs Assessment** — Systems that are too large or too small don't deliver comfort. Our team is trained to recommend a system that truly meets your needs.

**Unbiased Recommendations** — Our estimators are NOT paid on commission. Their recommendations are based on your needs, not incentives to earn more.

**Price Competitive** — Our pricing options meet every budget. We are large enough to purchase equipment in bulk to save you money.

**Full-Service Contractor** — Cooling, heating, plumbing, electrical, and more from an expert team averaging more than 10 years of experience.

**Professionalism** — We strive to be on time for appointments and are respectful of your home.

**Financing** — Three flexible financing plans available, including a "6 months no-interest" option to those who qualify.

**Repeat Customers** — Having many repeat customers shows that we deliver on our promises.

**Responsive** — With over 525 employee-owners and 320 trucks, we are able to meet your off-hour and holiday needs better than other service providers.

**Respectful** — From the front desk to the service technician, we treat you with courtesy and respect.

**Stable** — Since 1914, we have provided comfort systems to thousands of mid-state residences. We are fully insured and licensed.





# Water Heaters ELECTRIC Water Heaters

HB McClure believes in providing the highest quality service and equipment for your home plumbing needs. That's why we use Bradford White water heaters for all of our residential installations. Bradford White provides greater efficiency and dependability than any other brand. You trust us. We trust Bradford White.



## GOLD

### AeroTherm™ Heat Pump Series

The Bradford White AeroTherm Series water heaters offer the energy and cost-saving benefits important to today's energy conscious consumer.



Model:	RE2H50R10B	RE2H80R10B
Nominal Capacity	50 Gallons	80 Gallons
First Hour Rating	64 Gallons	89 Gallons
Uniform Energy Factor	3.24	3.25
Est. Energy Cost/year	\$120	\$183
Limited Tank Warranty	10 years	10 years
Limited Parts Warranty	10 years	10 years
	\$	

- Available in 50-, 66-, or 80-gallon tanks
- Energy Star Qualified meets/exceeds most utility rebate programs
- Digital control panel with LED display is user-friendly and easy-to-read
- Flexible operating modes allows for heat pump only, electric only or hybrid [both] operation
- American made

## SILVER and BRONZE

### RE340T6 and RE350T6

Our silver and bronze grade water heaters are engineered for superior performance. The silver provides a 10-year warranty while the bronze offers a 6-year warranty.



Model	RE340T6	RE350T6
Nominal Capacity	40 Gallons	50 Gallons
First Hour Rating	55 Gallons	63 Gallons
Uniform Energy Factor	0.93	0.93
Est. Energy Cost/year	\$419	\$419
Limited Tank Warranty	Silver 10 yrs. / Bronze 6 yrs.	Silver 10 yrs. / Bronze 6 yrs.
Limited Parts Warranty	Silver 10 yrs. / Bronze 6 yrs.	Silver 10 yrs. / Bronze 6 yrs.
	\$	

- Vitraglas® lining engineered to provide superior tank protection
- Hydrojet® Total Performance System reduces sediment and increases first hour performance ratings
- Factory-installed heat traps reduce piping heat loss and eliminate potential noise generation
- Non-CFC foam insulation covers sides and top of tank for reduced energy consumption

## Bradford White's Hydrojet® Total Performance System does much more than clean the tank!

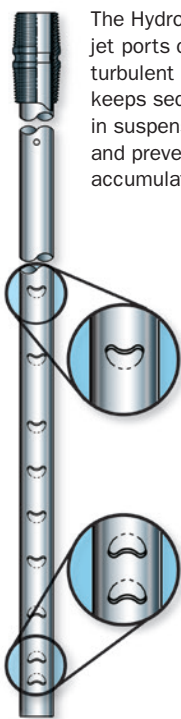
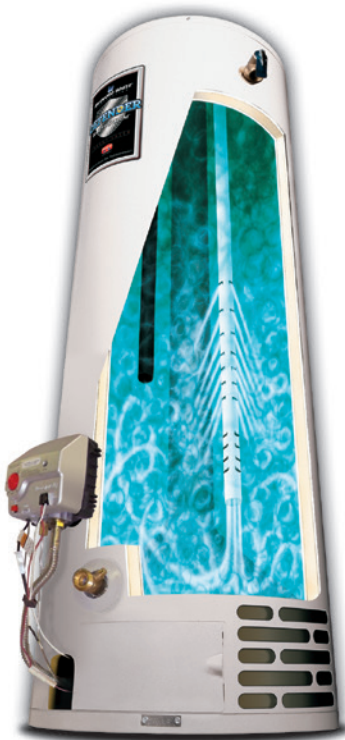
- Greatly reduces harmful sediment build-up
- Efficient mixing reduces and balances thermal stratification
- Improves first hour rating
- Improves overall operating efficiency
- Lengthens the life of the water heater
- Reduces energy costs
- Provides more hot water for the money
- Standard equipment on top connect models – no extra cost



### Hydrojet Total Performance System

The Hydrojet Total Performance System is a cold-water delivery tube that reduces sediment buildup and thoroughly mixes incoming water with stored water reducing thermal stratification. The secret is a series of flow altering "jet ports." These ports create counter-rotation and dynamic turbulence that effectively blasts sediment into suspension and prevents its accumulation.

The Hydrojet Total Performance System also creates more efficient temperature mixing inside the tank. Heating efficiency and usable hot water delivery are greatly increased, thereby saving energy and money.



The Hydrojet System jet ports create a turbulent flow that keeps sediment in suspension and prevents its accumulation.

# Water Heaters GAS Water Heaters



At HB McClure we want you to think of us as your trusted advisors for all of your home plumbing needs. That's why we only use Bradford White brand gas hot water heaters. Bradford White provides the quality, efficiency, and dependability you want in a gas hot water heater. Bradford White is a name we trust, and we believe it's a name you will trust, too.

## GOLD

### High Efficiency eF Series®

Gold gas water heaters offer higher hot water recovery than similar BTU/hr input models. This residential water heater is the energy-saving solution to high hot water demand in almost any home.



Model	RC2PV50H6N
Nominal Capacity	50 Gallons
First Hour Rating	131 Gallons
Uniform Energy Factor	0.79
Est. Energy Cost/year	\$233
Limited Tank Warranty	6 years
Limited Parts Warranty	6 years
	\$

- Vertical, dual-pass heat exchanger for increased efficiency and improved corrosion protection
- ICON System™ with spark ignition and microprocessor to maintain consistent and accurate temperatures
- Vitraglas® lining provides superior tank protection
- Hydrojet® Total Performance System reduces sediment and increases first hour performance ratings
- Factory-installed heat traps reduce piping heat loss and eliminate potential noise generation
- Non-CFC foam insulation covers sides and top of tank for reduced energy consumption
- Available in natural gas and propane

## SILVER

### RG1PV40S6N, RG1PV50S6N, and RG2PV75H6N

Silver gas water heaters maximize efficiency while offering greater flexibility in installation options.



Model	RG1PV40S6N	RG1PV50S6N	RG2PV75H6N
Nominal Capacity	40 Gallons	50 Gallons	75 Gallons
First Hour Rating	71 Gallons	83 Gallons	126 Gallons
Uniform Energy Factor	0.63	0.67	0.59
Est. Energy Cost/year	\$208	\$292	\$313
Limited Tank Warranty	6 years	6 years	6 years
Limited Parts Warranty	6 years	6 years	6 years
	\$		

- ICON System™ with spark ignition and microprocessor to maintain consistent and accurate temperatures
- Vitraglas® lining engineered to provide superior tank protection
- Hydrojet® Total Performance System reduces sediment and increases first hour performance ratings
- Factory-installed heat traps reduce piping heat loss and eliminate potential noise generation
- Non-CFC foam insulation covers sides and top of tank for reduced energy consumption
- Available in natural gas and propane

## BRONZE

### RG230T6N, RG240T6N, and RG250T6N

Bronze gas water heaters deliver an economical performance that lowers your energy bills and provides long-lasting value.



Model	RG230T6N	RG240T6N	RG250T6N
Nominal Capacity	30 Gallons	40 Gallons	50 Gallons
First Hour Rating	59 Gallons	74 Gallons	86 Gallons
Uniform Energy Factor	0.61	0.59	0.65
Est. Energy Cost/year	\$198	\$205	\$283
Limited Tank Warranty	6 years	6 years	6 years
Limited Parts Warranty	6 years	6 years	6 years
	\$		

- ICON System™ with spark ignition and microprocessor to maintain consistent and accurate temperatures
- Vitraglas® lining engineered to provide superior tank protection
- Hydrojet® Total Performance System reduces sediment and increases first hour performance ratings
- Factory-installed heat traps reduce piping heat loss and eliminate potential noise generation
- Non-CFC foam insulation covers sides and top of tank for reduced energy consumption
- Available in natural gas and propane

# Water Heaters TANKLESS Water Heaters

Want hot water without the wait? Tankless is the answer. Tankless gas hot water heaters supply hot water only when it's needed, thus eliminating the cost of traditional systems that expend energy to constantly maintain a full tank of hot water. Instead, tankless systems heat water on demand by using

a flow sensor to activate a gas burner that warms the heat exchanger within the tankless system. The water flows across the heat exchanger and exits at a set temperature, so you have as much hot water as you want and only when you want it.

## NPE-S Tankless Gas Hot Water Heater

The NPE-S tankless gas hot water heater provides the industry's top-rated energy efficiency with lower installation and operating costs.

Temperature Rise (°F)	NEW 150S GPM	180 Series GPM	210 Series GPM	240 Series GPM
70	3.4	4.2	5	5.5
Operating Cost	\$165	\$165	\$165	\$165

### Warranty

	Application	Labor	Parts	Heat Exchanger
Residential	Standard or controlled recirculation	1 Year	5 Years	15 Years
	Uncontrolled recirculation	1 Year	3 Years	5 Years

- Up to .97 Uniform Energy Factor
- Low installation cost
- Low operating cost
- Operating costs based on 151 therms



# Hot Water Recirculation

## Hot Water Recirculation Pump

A hot water recirculation pump is another solution that provides hot water without wasting water. When hot water is needed, the recirculation pump installed at the fixture purges the water line of cold water and diverts it back into the cold-water supply. So, cold water that would typically be wasted while waiting for hot water to arrive is recirculated back into the system, saving you money on your water bill.

- Installation takes an hour or less
- Uses little or no energy (depending on model)
- Saves up to 16,000 gallons of water per year
- 30-month warranty



## Mixing Valves

Whenever you turn on the faucet to wash dishes or take a shower, you are mixing hot and cold water. A mixing valve performs the same function, but it does so at the water heater instead of at the faucet. Because the mixing valve is mounted at the water heater, hot water meets cold water right as it leaves the hot water tank, and less hot water is removed from the tank to achieve a desired temperature.

- Increases hot water storage capacity without increasing tank size
- Works with electric or gas water heaters
- Makes water temperature safe, even when running water heater at max. temperature



## Water Safety—Wi-Fi Water Leak Detector

A typical residential water leak can cost thousands of dollars in repairs, which is why so many homeowners are opting to install wi-fi water leak detectors. A wi-fi water leak detector can alert you to a water leak anytime, anywhere, before it causes major damage to your home. At work or on vacation, you'll know if a water leak is happening in your home, so you can take immediate steps to fix the problem before significant damage can occur.



## Water Safety—FloodStop

You've heard the horror stories of the homeowner who returns from a week's vacation to discover six inches of water in the basement. To avoid being "that guy," many homeowners opt to install FloodStop valves for every appliance that uses water. Sinks, washing machines, dishwashers, water heaters, toilets—any one of these could be the source of a leak that could cause major water damage to your home. FloodStop valves prevent flooding from ever happening by shutting off the water supply to the appliance whenever it starts to leak.

### 5 Reasons to Choose FloodStop:

- FloodStop is the only product of its kind that uses solid (lead free) brass, motorized ball valves for every appliance in your home.
- Units can be powered by batteries or AC.
- Water heater units are full port valves with zero pressure restrictions and UPC approval.
- Automatic monthly cycling of the valves.
- Named one of Readers Digest top 100 new products.



## Water Safety—Tank Pans

Many homeowners have drain pans installed under their water heaters, but if the pan doesn't include a line to route the water to a drain, it's only delaying the inevitable. A properly installed drain pan can prevent damaging water leaks by connecting a metal or plastic drain pan to an appropriate run-off location.





# Water Softeners

Hard water can leave your hair looking dry and dull and your skin feeling itchy and flakey, and that's only what it does to your body. In your home, hard water also causes mineral build-up on pipes, showerheads, and faucets, causing them to lose efficiency and function, and it scores and spots your dishes, making them look like you never even ran the dishwasher.

Soft water alleviates all of these issues and improves the function of all of your water-using appliances by eliminating the build-up of hard water scale and helping your faucets function as fully as the day they were installed. And, the cost of a water softener is easily recouped through the longer life of your pipes and appliances. Even your water heater will operate more efficiently over time, as it remains free of tank build-up.

## GOLD

### X-Factor Series LX

The X-Factor Series LX electronic water softener provides superior water conditioning with a state-of-the-art control valve and distribution system that ensures peak efficiency and provides performance information.



- Vortech tank saves water and never needs gravel
- Enhanced control valve digital display for improved diagnostics and more precise set-up

Model:	7-LX-75B	7-LX-100B	7-LX-150B	7-LX-200B	7-LXC-50B	7-LXC-75B
Mineral Tank Size (in.)	8 x 44	10 x 40	10 x 54	12 x 48	9 x 18	10 x 35
Brine Tank Size (in.)	15 x 17 x 36	5 x 17 x 36	15 x 17 x 36	5 x 17 x 36	14 x 21 x 28	14 x 21 x 45
Service Flow Rate (gpm)	13	17	16	18	14	18
Backwash Rate (gpm)	1	1.7	1.7	2.7	0.7	0.7
\$						

### X-Factor Series LX City Soft Plus

The X-Factor Series LX City Soft Plus electronic water softener/filter provides two treatment technologies that soften water and remove chlorine simultaneously.

- Vortech tank saves water and never needs gravel
- Enhanced control valve digital display for improved diagnostics and more precise set-up



Model:	7-LXDNS-75	7-LXDNS-100	7-LXDNS-150	7-LXDNS-200	7-LXDCS-75	7-LXDCS-100	7-LXDCS-150	7-LXDCS-200
Mineral Tank Size (in.)	10x54	10 x 60	13 x 54	13 x 54	10 x 54	10 x 60	13x54	13 x 54
Brine Tank Size (in.)	15 x 17 x 36	15 x 17 x 36	15 x 17 x 36	18 x 40	15 x 17 x 36	15 x 17 x 36	15 x 17 x 36	18 x 40
Service Flow Rate (gpm)	5	5	10	10	5	5	10	10
Backwash Rate (gpm)	2.2	2.2	3.2	3.2	2.2	2.2	3.2	3.2
\$								

## SILVER

### X-Factor Series LES

The X-Factor Series LES water softener includes a solid-state microprocessor control and an LCD display that monitors a variety of functions, such as water consumption, water flow rates, and regeneration data.



	7-LES-75B	7-LES-100B	7-LES-150B	7-LES-200B	7-LECS-50B	7-LECS-75B
Mineral Tank Size (in.)	8 x 44	10 x 40	10 x 54	12 x 48	9 x 18	10 x 35
Brine Tank Size (in.)	15 x 17 x 36	5 x 17 x 36	15 x 17 x 36	18 x 40	14 x 21 x 28	14 x 21 x 45
Service Flow Rate (gpm)	11	13	14	16	12	16
Backwash Rate (gpm)	1.7	2.7	2.7	3.2	2.2	2.7
\$						



## BRONZE

### PEL Series

The PEL Series electronic water softener is an economical solution for removing unwanted hardness and minerals with cost-efficient operation.

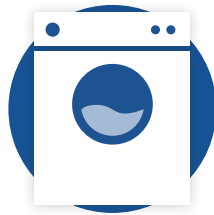


	7-PEL-75B	7-PEL-100B	7-PEL-150B
Mineral Tank Size (in.)	8 x 44	10 x 40	10 x 54
Brine Tank Size (in.)	15 x 17 x 36	15 x 17 x 36	15 x 17 x 36
Service Flow Rate (gpm)	10	12	12
Backwash Rate (gpm)	1.7	2.7	2.7
	\$		

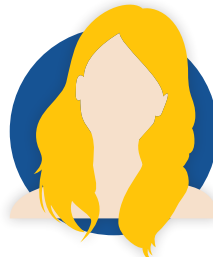
## Soft Water Benefits



Appliances and pipes last longer



Laundry stays softer and brighter



Smoother hair and softer skin



Less scale buildup, stains, and soap residue



Up to 20% yearly savings on water heating

## Water Conditioners—Iron

Our X-Factor Series water conditioners soften water and remove up to 10 ppm of Ferrous (clear water) iron and/or Ferric (red water) iron. These dependable, easy-to-install units assure your system will

perform reliably with backwash rates that allow use on even poor-producing wells. And because they are not sensitive to pH, the X-Factor Series can be operated in acidic water.

## GOLD

### X-Factor Series FESLX



Model:	FESLX-24B	FESLX-32B	FESLX-45B	FESLX-60B
Grains Capacity	24,000	32,000	48,000	64,000
Mineral Tank Size (in.)	8 x 44	10 x 47	12 x 48	13 x 48
Brine Tank Size (in.)	18 x 33	18 x 33	18 x 33	18 x 40
Service Flow Rate (gpm)	12	15	22	30
Backwash Rate (gpm)	0.7	1.3	1.3	1.3

\$

- Performs even on relatively poor-producing wells
- Can operate in acidic water
- Available in two-tank model or space-saving cabinet

- Vortech tank saves water and never needs gravel
- Enhanced control valve digital display for improved diagnostics and more precise set-up

## SILVER

### X-Factor Series FESLES



Model:	FESLES-24B	FESLES-32B	FESLES-45B	FESLES-60B
Grains Capacity	24,000	32,000	45,000	60,000
Mineral Tank Size (in.)	8 x 44	10 x 47	12 x 48	13 x 48
Brine Tank Size (in.)	15 x 17 x 36	15 x 17 x 36	15 x 17 x 36	18 x 40
Service Flow Rate (gpm)	11	13	14	16
Backwash Rate (gpm)	1.3	1.7	1.7	1.7

\$

- Performs even on relatively poor-producing wells
- Can operate in acidic water
- Available in two-tank model or space-saving cabinet

# Water Conditioners – Neutralizers

All X-Factor Series neutralizers are equipped with state-of-the-art electronic control valves and plated-tank technology designed for the best possible service and backwash rates. Carbon filters remove

organic chemicals and other contaminants, which cause color, taste, and odor problems, and a variety of filters are available to treat specific water problems in your home.

## GOLD

### X-Factor Series LX

- Treats water to protect pipes and appliances
- Eliminates blue-green staining associated with low pH
- Flow rates won't disrupt household water pressure
- Vortech tank saves water and never needs gravel
- Enhanced control valve digital display for improved diagnostics and more precise set-up



Model:	Tank	Service GPM Cont.	Service Peak	Backwash GPM
<b>Color, Taste &amp; Odor (Carbon) Filters</b>				
7-LXCT-1B	10 x 44	5	8	6.5
7-LXCT-2B	13 x 48	7	9	10
7-LXCT-3B	14 x 65	10	12	10
<b>Acid Neutralizer (Calcite) Filters</b>				
7-LXDAN-1B	10 x 47	5	8	6.5
7-XDAN-1.5B	10 x 54	6	9	6.5
7-LXDAN-2B	13 x 48	7	10	10
7-LXDAN-3B	13 x 65	10	12	10
<b>Sediment/Turbidity (Filter AG) Filters</b>				
7-LXST-1B	10 x 44	5	8	5.3
7-LXST-2B	13 x 48	7	9	9
7-LXST-3B	14 x 65	10	2	9
<b>Iron (Birm) Filters</b>				
7-LXIM-1B	10 x 44	5	8	6.5
7-LXIM-2B	13 x 48	7	9	10
7-LXIM-3B	14 x 65	10	12	10
<b>Iron (MTM) Filters</b>				
7-LXTPI-1B	10 x 44	5	8	6.5
7-LXTPI-2B	13 x 48	7	9	11
7-LXTPI-3B	14 x 65	10	12	11

\$

## SILVER

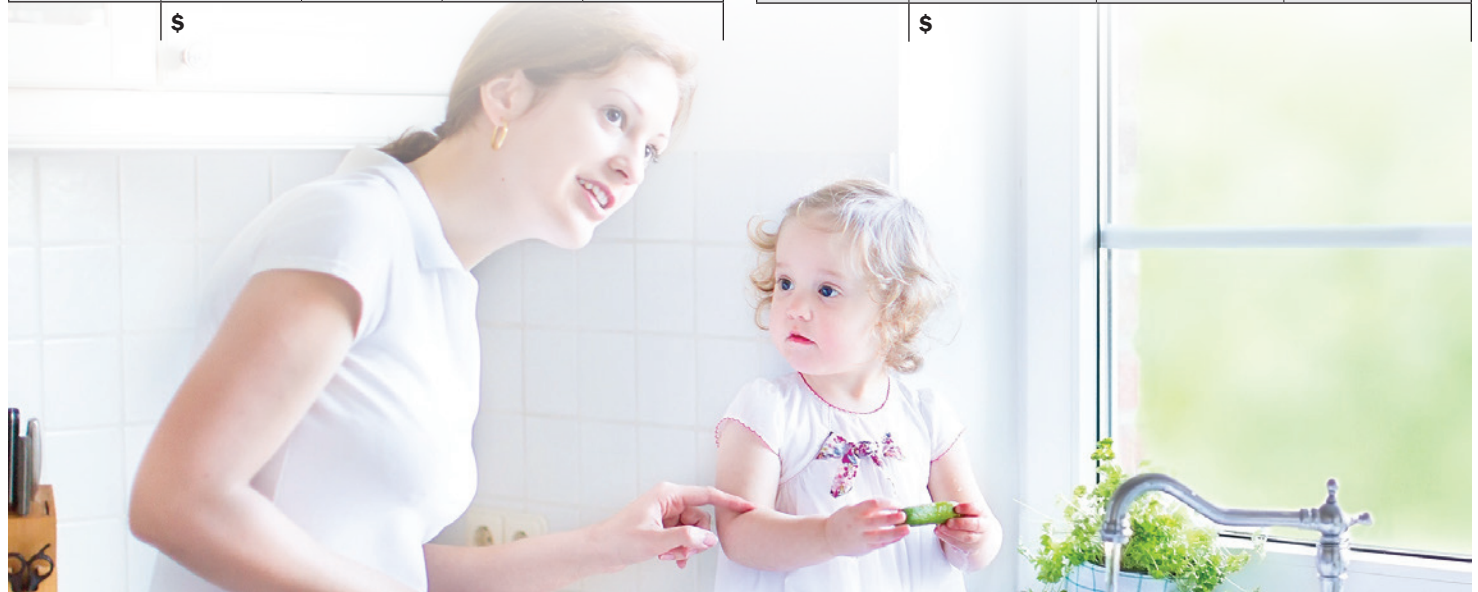
### X-Factor Series LET

- Treats water to protect pipes and appliances
- Eliminates blue-green staining associated with low pH
- Flow rates won't disrupt household water pressure



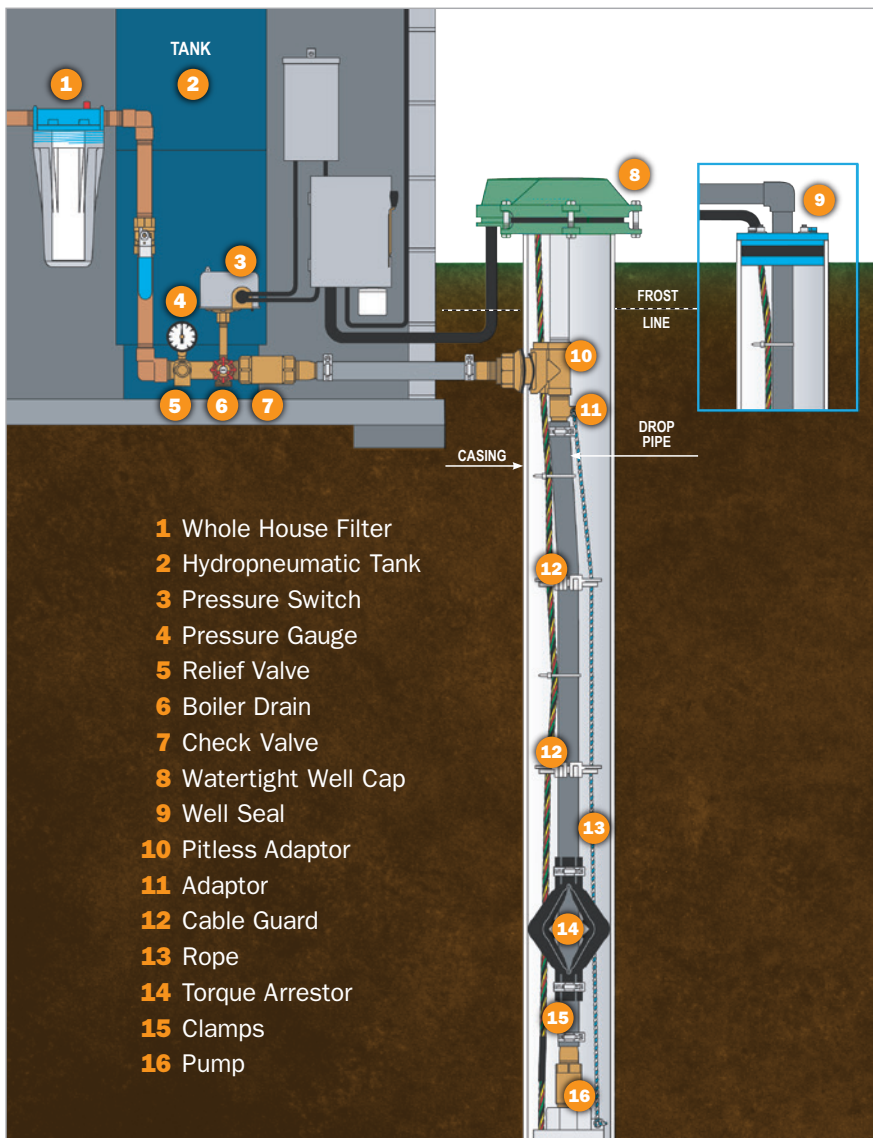
Model:	Tank	Service GPM Cont.	Backwash GPM
<b>Color, Taste &amp; Odor (Carbon) Filters</b>			
7-LETCT-1B	10 x 44	5	6.5
7-LETCT-2B	13 x 48	7	10
7-LETCT-3B	14 x 65	10	10
<b>Acid Neutralizer (Calcite) Filters</b>			
7-LETAN-1B	10 x 47	5	6.5
7-LETAN-1.5B	10 x 54	6	6.5
7-LETAN-2B	13 x 48	7	10
7-LETAN-3B	13 x 65	10	—
7-UFAN-1B	10 x 44	5	—
7-UFAN-1.5B	10 x 54	6	—
7-UFAN-2B	12 x 48	7	—
7-UFAN-3B	14 x 65	10	—
<b>Sediment/Turbidity (Filter AG) Filters</b>			
7-LETST-1B	10 x 44	5	5.3
7-LETST-2B	13 x 48	7	9
7-LETST-3B	14 x 65	10	9
<b>Iron (Birm) Filters</b>			
7-LETIM-1B	10 x 44	5	6.5
7-LETIM-2B	13 x 48	7	10
7-LETIM-3B	14 x 65	10	10
<b>Iron (MTM) Filters</b>			
7-LETPIM-1B	10 x 44	5	6.5
7-LETPIM-2B	13 x 48	7	11
7-LETPIM-3B	14 x 65	10	11

\$





# Well System Maintenance & Repairs



If your home relies on a well to supply water, regular preventative maintenance is essential to ensure the reliable performance of your well system and the safety of the water coming into your home. HB McClure recommends an annual inspection and routine, scheduled maintenance, and we can repair or replace any component of your well system. HB McClure well services include:

- Correcting water flow and pressure issues
- Water testing
- Water conditioning system installation and repair
- Visual inspection of well site and well components
- Correcting electrical supply problems
- Service plans
- 24-hour emergency service

Whatever your well system needs, HB McClure is your trusted advisor for all of your inspection, maintenance, and repair services, so you don't have to worry about a thing.

## Water Pressure Control

Inadequate water pressure occurs when sudden demand from one fixture or appliance produces a pressure drop for all other fixtures and appliances in your home. Water pressure control improves your well system performance by maintaining constant water pressure, regardless of how many people or appliances are using the water at the same time. From the shower to the dishwasher to the washing machine, consistent pressure makes sure that you, your dishes, and your clothes are as clean as they can be.



# Filter System

An important part of your well system is the filter system. Our filter housings offer the versatility to meet all of your large-capacity filtration needs, including high flow and heavy sediment applications. Extra-large housing allows for greater cartridge capacity, reducing the number of vessels required for high flow rate applications.



Part #	150469	150467	150237	150233	150239	150235
Description	3/4" #10 Big Blue Black/Blue HFPP w/ PR	3/4" #20 Big Blue Black/Blue HFPP w/ PR	1" #10 Big Blue Black/Blue HFPP w/ PR	1" #20 Big Blue Black/Blue HFPP w/ PR	1-1/2" #10 Big Blue Black/Blue HFPP w/ PR	1-1/2" #20 Big Blue Black/Blue HFPP w/ PR
Max. Dimensions	12.75" x 7.38" [324 x 187 mm]	23.04" x 7.38" [585 x 187 mm]	13.30" x 7.74" [338 x 189 mm]	23.22" x 7.45" [590 x 189 mm]	13.45" x 7.45" [342 x 189 mm]	23.74" x 7.45" [603 x 189 mm]
Initial PSI @ Flow Rate	2 psi @ 15 gpm [0.14 bar @ 57 Lpm]	2 psi @ 15 gpm [0.14 bar @ 57 Lpm]	1 psi @ 15 gpm [0.07 bar @ 57 Lpm]	1 psi @ 15 gpm [0.07 bar @ 57 Lpm]	1 psi @ 20 gpm [0.07 bar @ 76 Lpm]	1 psi @ 20 gpm [0.07 bar @ 76 Lpm]
	\$					

# UV Light System

UV light systems treat your water supply by applying UV light that penetrates bacteria and disinfects your water while inactivating 99.99% of harmful microorganisms. UV technology is more effective than chemicals like chlorine in destroying certain waterborne contaminants without altering the taste of water.



Model:	7-LWT-UV009	7-LWT-UV016
Flow Rate	9 GMP	16 GPM
Inlet Outlet Size	1" MNPT	1" MNPT
NO. Lamps	1	1
System Monitor	Lamp on, lamp life remaining (days), ballast total running days, lap replacement reminder, lamp failure	Lamp on, lamp life remaining (days), ballast total running days, lap replacement reminder, lamp failure
Max. Lamp Hours	9000	9000
Max. Operating Pressure	125 PSI	125 PSI
Vessel DxH Inches	3.50 x 17.38	3.50 x 25.63
	\$	



# Sump Pumps

Sump pumps are a critical component in keeping unwanted water out of your basement. To keep your home dry, it's important to have a sump pump that you can rely on to pump water efficiently and effectively out of the sump basin and away from your home. Sump pump capacity is determined by the location, water table, and

flooding conditions of your home, and every sump pump installed by HB McClure is available with a remote notification option that can integrate into your home security system for added peace of mind.

## Sump Pumps—High Capacity

### GOLD (with Battery Backup)

#### Pro Series PS-C33

- Dual float switches on primary and back-up pumps
- Automatically switches to battery power when AC fails
- Back-up pump will assist primary pump if excessive amounts of water are entering the sump
- Maintains and recharges battery automatically
- Designed for use with maintenance or maintenance-free batteries

Pro Series PS-C33	Primary Pump	Back-up Pump
Flow Rate [ @ 10ft Head]	3000 GPH/ 50 GPM	2400 GPH/ 40 GPM
Horsepower	1/3 HP	1/3
Warranty	4 Year	3 year
	\$	



### SILVER

#### ST1033-DFC1.5

The ST1033-DFC1.5 sump pump provides powerful pumping capacity at 46.1 GPM @ 10'.

Model:	ST1033-DFC1.5
Flow Rate [ @ 10ft Head]	2770 GPH/46.1 GPM
Horsepower	1/3
Warranty	3 year
	\$



Pro Series Pumps feature:

- 1/3 HP energy efficient motor
- Durable, cast iron/cast aluminum construction
- Harmonically balanced, quiet operation

## Sump Pumps—Standard Capacity

### GOLD (with Battery Backup)

#### ProPak 53

The ProPak 53 is a preassembled sump pump system with battery backup. The system comes fully assembled and provides up to 7 ½ hours of continuous operation on a full charge for extra protection when AC fails due to power outages.

- Includes Model 53 sump pump
- Automatic operation
- 5 ½ to 7 ½ hours of continuous operation
- Battery burn out and overcharge protection



### BRONZE

#### Model 53

Model 53 standard capacity sump pumps are built for reliability, durability, and performance. The preset, integral snap-action float switch is engineered for one million mechanical starts.

- 1 ½" NPT discharge
- 3/10 HP
- ½" spherical solids capacity
- Available in automatic and nonautomatic operation
- Engineered thermoplastic base

Model:	Model 53
Flow Rate [ @ 10ft Head]	2040 GPH/34 GPM
Horsepower	3/10
Warranty	3 year
	\$



### SILVER

#### Model 63

Model 63 standard capacity sump pumps offer advanced switch technology for longer switch life and are constructed of heat-dissipating cast iron with powder coated epoxy finish for maximum performance under extreme conditions.

- 1 ½" NPT discharge
- 3/10 HP
- ½" spherical solids capacity
- Automatic operation
- Cast iron base

Model:	Model 63
Flow Rate [ @ 10ft Head]	2040 GPH/34 GPM
Horsepower	3/10
Warranty	5 year
	\$



## Remote Sump Pump Notification

Sump pumps are available with technology that allows you to use wi-fi to receive text or email alerts about conditions such as power outages or low battery, and you can remotely silence or reset an alarm. Control apps and accounts are simple to setup and are completely free. Ask your HB McClure trusted advisor for more details.

# Drain Cleaning



Most homeowners don't think about drain cleaning as part of their routine home maintenance until there's a problem. Drains can become clogged by objects that accidentally enter the plumbing system by build-up of household cooking, cleaning, and bathing products or by unnoticed pipe deterioration. Some simple clues your drains may need cleaning are:

- Drains running slowly
- Garbage disposal not emptying
- Dishwasher not emptying



## Common causes of these conditions include:

- Build-up of soap, shampoo, and other bathing products
- Grease accumulation in kitchen or utility sinks
- Deterioration of old cast iron or clay pipes

Drain cleaning should be part of every homeowner's routine maintenance agenda, and HB McClure can get you started with an evaluation of your home plumbing system needs.

---

# Sewer Lines



Sewer line backups and well pump or tank problems need immediate attention to prevent a small issue from becoming a large, expensive problem. Just like the drains in your home, the sewer line is also susceptible to clogging and subsequent backup for many of the same reasons. Overfilling a garbage disposal or dumping grease down the kitchen sink may begin as a clogged drain but can end in a blocked sewer line. Tree roots can also penetrate the sewer line and disrupt the flow, causing a blockage. Finally, broken or damaged pipes or old cast iron or clay pipes may break down and block flow.

Whatever the cause, HB McClure will provide a thorough inspection and recommend the best solution for your sewer situation. We can also set you up for routine maintenance and service to avoid sewer backups from occurring in the future.





# Fixture Replacement

In addition to supplying all of your water heating and conditioning needs, your trusted advisors at HB McClure can also give you a hand with your bathroom improvement needs. We offer design and installation of plumbing systems for new homes or renovations as well as fixture replacement for remodeling projects. HB McClure will help you find an affordable, functional solution to fit your bathroom project.



## Gold Shield Comfort Contract Maintenance

Avoid plumbing and electrical emergencies with routine inspections provided by HB McClure. Our plumbing and electrical inspections include the services noted below, and we will always make recommendations and provide you with an overview of our findings.

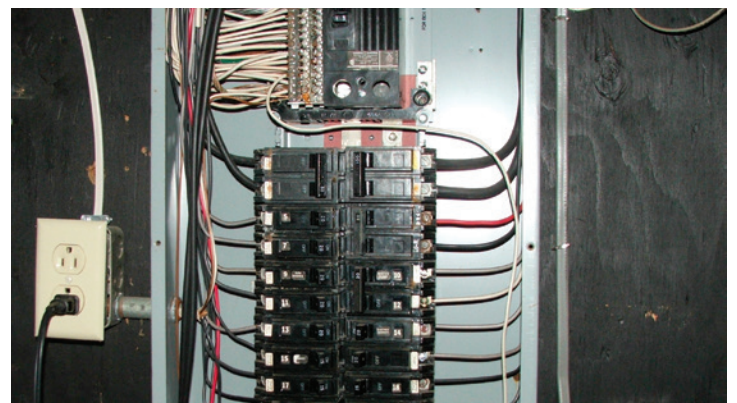
### Plumbing Inspection

- Collect or test water for hardness, iron, and pH
- Water softener maintenance (salt not included)
- Check and measure incoming water pressure (city or well tank pressure)
- Visual inspection of all exposed piping and fixtures for leaks, corrosion, and proper draining
- Inspect pressure relief tanks
- Inspect washing machine hoses and valves
- Label shut-off valves
- Ensure drain and supply plumbing is working
- Ensure plumbing system is code compliant

We also perform water softener and water heater services for an additional fee.

### Electrical Inspection

- Main wire into the home
- Main panel
- Receptacles and switches
- Exposed wiring in basement or near panel box
- GFCI circuits
- Permanent fixtures: exhaust fans, ceiling fans, lamp posts
- Smoke alarms
- Code compliance



# Are You Taking Advantage of All We Have to Offer?

No other home comfort company in Central Pennsylvania can provide as many services as we can. Thousands of clients call us dozens of times per year because they know that no matter the problem, they can trust us to deliver comfort using high quality products and skills at the most competitive prices.

## Did you know you can also call us for:



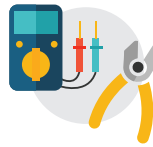
### Heating & Cooling

- Air Filtration
- Carbon Monoxide Detectors
- Duct Cleaning
- Humidification
- Programmable Wi-Fi Stats



### Plumbing

- Bathroom Fixtures
- Bathroom Remodeling
- Drain Cleaning
- Water Heaters
- Well Tanks/Pumps
- Sewer/Water Lines



### Electrical

- Back Up Generators
- Circuit Repairs
- Panel Upgrades



HB McClure takes a “We Recommend. You Decide.” approach to service. We understand that you want to make the right choice for your home and budget, so we recommend the best solutions, and you decide which one is right for you. Our technicians are employee-owners, not commissioned salespeople. That means there’s no pressure on you to buy. The only pressure is on us to become your trusted advisors for all of your plumbing needs.

EMPLOYEE-OWNED

# HBMcCLURE

WE RECOMMEND. YOU DECIDE.™

**HB McClure, LLC**

717-232-HEAT (4328) Harrisburg

717-845-HEAT (4328) York

717-243-9011 Carlisle

717-534-2661 Hershey

[www.hbmccclure.com](http://www.hbmccclure.com)